



NEW EARTH WORLD SOLUTION



go **PLASFORM**
go **GREEN**
go **ESG**





GREEN BEYOND JUST COLOURS:

THE IMPORTANCE OF USING SUSTAINABLE MATERIALS

In today's rapidly evolving world, the construction industry plays a pivotal role in shaping our built environment.

However, conventional methods and materials have often caused significant environmental degradation, resource depletion, and increased carbon emissions.

As awareness of these issues grows, there is an urgent call for going green by adopting sustainable practices in construction.

Minimizing environmental impact by reducing waste, lowering greenhouse gas emissions, and conserving natural resources is crucial. Technological advancements in sustainable materials offer superior performance, durability, and reduced environmental impact. Promoting social responsibility and enhancing the well-being of communities by creating healthier living spaces is essential. Aligning with the global embrace of ESG, using sustainable materials is not just an ethical imperative but a practical solution to safeguarding the planet for future generations.

CHAIN EFFECT OF CLIMATE CHANGE

Deforestation



Melting glaciers risen the sea level



Deforestation & melting glaciers have caused sea levels to rise. Average sea levels have increased over **8 inches** since 1880, with nearly 3 inches of that gain in the last 25 years. **Each year, the sea rises another 0.13 inches (3.2 mm)**. Sea level rise is accelerating & projected to rise by a foot by 2050. (Source: National Geographic, 10 Apr 2023) The use of non-sustainable materials contributes to flood disasters.

Source: National Geographic, 10 Apr 2023



Use of non sustainable material



Flood disaster



WE SUPPORT SUSTAINABILITY

Since 2024, Millennium has been an **ESG** - compliant company, audited based on internationally recognized **SMETA** ESG standards.

As a proud **Sedex** member, we are committed to being a responsible and sustainable business partner not just for current projects, but into the future.

Sedex | Member

OUR CERTIFICATION & COMPLIANCE

PLASFORM RANGE OF PRODUCTS CERTIFICATION



Industrialized Building System (IBS) Assessment & Certification CIS 24:2023 by CIDB Malaysia



Certification of Construction Product & Material (CCPM) by CIDB Malaysia



Construction Product Approval (CPA) Certification by Construction Research Institute of Malaysia (CREAM)



Eco Label License ECO 018:2017 by SIRIM QAS International (Certification No: EL000233)



Malaysia Goods Logo Certification by Ministry of Domestic Trade & Cost of Living

COMPANY CERTIFICATION



Quality Management System ISO 9001:2015 by Global Compliance Certification Pty Ltd, Australia



ESG Compliance to Sedex Members Ethical Trade Audit (SMETA) 4-Pillars by Sedex UK

ESG

TO YOU & THE WORLD

Opting for a formwork manufacturer that aligns with global ESG standards supports the global push towards sustainability & enhances the reputation of construction projects. It attracts environmentally conscious investors and clients, while contributing to a more sustainable and equitable world.



Our Plasform range of products bears the **SIRIM Eco Label 018:2017** certification, demonstrating our commitment to the environment by incorporating **at least 50%** post-consumer and post-industrial plastic goods.

Every Plasform sold helps reduce plastic waste globally, which might otherwise end up in landfills or oceans.



DOWNLOAD OUR
CERTIFICATES
& REPORT

[CLICK HERE](#)



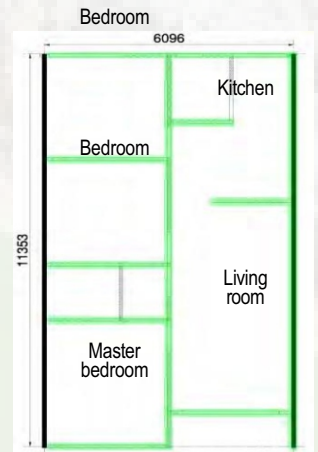
ENVIRONMENTAL FACTS & COMPARISON

YOUR OPTIONS **MATTER** FOR FUTURE GENERATIONS

Using Plasform as reusable formwork instead of plywood in construction significantly contributes to sustainability and efficiency. It reduces waste, conserves forests, and lowers carbon emissions associated with plywood use. It also streamlines construction processes with quicker setup and dismantling times, enhancing productivity and safety on-site.

Illustrative data based on a 200-unit single-storey terrace link house project:

- Wall formwork area: 369 m²
- Height of typical wall: 3,200 mm
- Height of party wall (highest point): 5,700 mm
- Formwork sets: One complete set (crane handle)



Environment Variables

Qty of formwork material per cycle

18mm Plywoods

124 Pcs

Plasform Panels

One-time purchase of 513 pcs (1200x600mm)

Qty disposed at end of project

2,480 Pcs to landfill

51 Pcs sent for recycling (approx. 10% loss/damage)

Waste generated

29,760Kgs of plywood waste.

No waste; damaged panels recycled

Trees cut down

655 Matured trees.

No trees cut

CO² emissions during production

22,320Kgs for 2,480Pcs of Plywood.

9,825Kgs for 513 Pcs of Plasform Panels.

Recyclable

Not recyclable

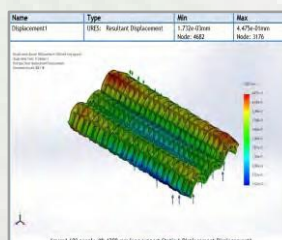
Fully recyclable

Disclaimer: Data above is estimated based on industry best practices. It does not reflect absolute accuracy. Figures may vary according to machine use, speed, production efficiency etc. This information is for general reference only.

RESEARCH & DEVELOPMENT

We are dedicated to advancing the industry through innovative research and development. By prioritizing sustainability and efficiency, we reduce wastages and improve project cost-effectiveness, while delivering reliable and eco-friendly solutions that contribute positively to the environment and construction practices.

The green PP resins compounded for Plasform is the result from years of R&D, and yet it still receive improvement.



▲ Software simulation using Solidworks 3D to ensure product design meets the highest standards.



▲ 3D printer was used for prototyping, ensuring good usability to end user.



TRANSITION TO SUSTAINABLE CONSTRUCTION

Plasform panels are reusable for 200 times, which is 20 to 40 times more than a typical Plywood could provide

A GREEN ASSET TO BUILDERS

Plasform is a precision modular engineered plastic formwork panel that can be used for wide range of structure forming. Designed in Malaysia and patented in multiple countries, Plasform is a **valuable assets** that every builders should own, its **re-usability** and **versatility** allows builders to stay committed to its sustainable construction goals, projects after projects and many years to come.

MODULAR DESIGN

Modular size that allow you to form any structures, project after project.

SMOOTH FINISHING

Smooth concrete finishing even over many times of reuse.

TOUGHNESS & ELASTICITY

The smooth surface is able to withstand impact force.

LIGHT WEIGHT

Easy to handle and assemble.

NON-STICK TO CONCRETE

Easy cleaning & maintenance throughout its useful life.

HIGH REUSABILITY

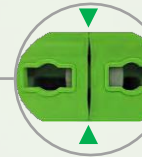
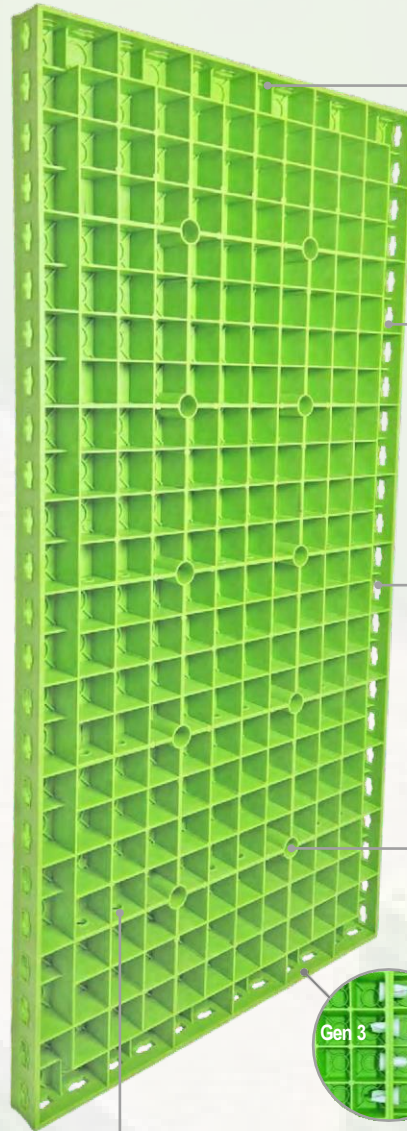
Designed to be reused over 200 times with proper maintenance.

SUSTAINABLE MATERIAL

It is made from at least 50% of recycle plastic, and fully recyclable.

GREAT

Compatible and able to complement with common shoring system on the market.



SELF DRAINING
Patented water self-draining design.



TOOLS FREE JOIN
Tools free & effortless panel join with wing clamp.



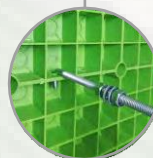
PIN & WEDGE
Compatible with legacy Pin & Wedge for tighter fit



TIE ROD SUPPORT
Multiple tie rod hole position available & pluggable when not in use.



COMPATIBILITY
Compatible with legacy Plasform Generation 3 & 4 using Pin & Wedge.



J-BOLT POSITION
J-bolt hook & support at multiple position.

TWO SOLUTIONS DRIVEN BY YOU

fulsystem

Full structure forming solution provided, designed in accordance to your structure forming needs.

Less hassle for builders so you can focus more on what matters the most for you.

Complete equipment provided as per engineering design.

Suitable for specific intended application.

Relatively high repetitive casting without dimension change.

Field service and design engineering are provided for limited time at no further cost.

do it yourself

The intended way of using Plasform. Plasform is meant to replace the plywood for structure forming.

Cost efficiency is priority, you want to get the most out of your investment.

Utilizing existing equipment that is readily available at site.

Cater for non typical or no standardized application.

Relatively low repetitive casting, particularly for micro projects.

Field service and design engineering are available at affordable cost.



Both solutions are able to cater for either man handle or crane handle, depending on your construction needs and availability of resources.

Both solutions are able to integrate with any ply-face system formwork with timber, steel or aluminium girders for wall, column or slab.

Both solutions are able to help builders achieve its sustainable construction goal by reducing wastage, conserving forest, lowering CO² emission and support global ESG initiative.



DELIVERING GREEN & SUSTAINABLE FORMING SOLUTION TOGETHER

The **versatility** and **modular** advantage of Plasform range of product enabled us to deliver green forming solution to every builders across the world, in tandem with most common shoring, scaffolding and even other formwork solution provider.

Understanding your construction needs and ESG initiative, our team of expert work hand in hand with your selected solution provider to provide you the best possible solution that meets all your expectation.

We **work together** to help you built a **Greener** world.

PLASFORM PANELS Generation 5

- ☑ Available in 5 sizes to cater different needs
- ☑ Smooth finishing even after multiple use
- ☑ Non-stick to concrete
- ☑ Light weight & easy to handle
- ☑ Smooth surface able to withstand impact force
- ☑ Excellent weatherability
- ☑ Reusable over 200 times with proper care
- ☑ Made from sustainable materials
- ☑ Compatible with existing Plasform Gen 3 & Gen 4



▲ Image shown a set of complete assembled Plasform Panels with double bracing on positioning for casting of a multi-directional wall.

Length (mm)	Depth (mm)	Width (mm)	Coverage Surface (M ²)	Net Weight (Kg)
1200	53	600	0.72	±8.0
		300	0.36	±4.0
		200	0.24	±2.8
		150	0.18	±2.3
		100	0.12	±1.5

Material type	: Proprietary blend of Polypropylene (PP)
Material category	: High Impact Co-polymer
Method of Production	: Injection moulding
Colour	: Apple green (in a range)
Green facts	: Contains minimum of 50% recycle contents.



◀ Image shown a section of casted wall surface using Plasform, the surface is smooth and requires just skim coat to create a seamless finish.



▲ Image shown Plasform in action at the construction site of a high rise condominium project at Merak Mas, Melaka.

Disclaimer: The weight and colours of Plasform might varies from each batch due to variation origin source of recycled Polypropylene, however such variation does not constitute to any deviation in final product performance or reliability as it has been compounded to meet the required standards of quality.

CONNECTION & ACCESSORIES

Tie-rod Hole Cap



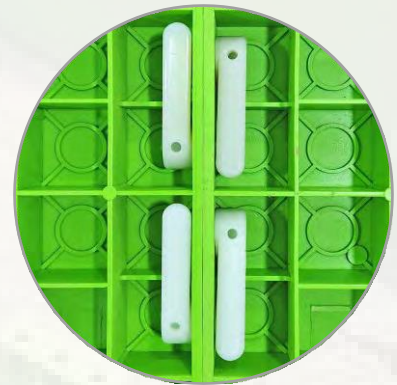
Material type	: Polypropylene (PP)
Colour	: Apple green (in a range)
Compatibility	: Plasform Generation 5
Overall size	: 25mm x 25mm x 28mm



Wing Clamp



Material type	: Nylon (PA)
Colour	: Cream
Compatibility	: Plasform Generation 5
Overall size	: 85mm x 40mm x 30mm



Pin & Wedge



Material type	: Acetal Copolymer (POM)
Colour	: White (Natural)
Compatibility	: All Plasform Generation & accessories
Overall size	: Pin 42mm x 28mm x 28mm Wedge 40mm x 20mm x 8mm



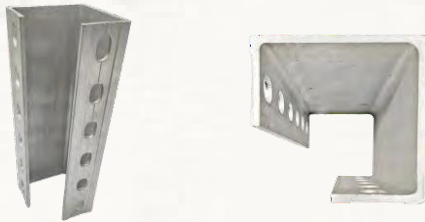
CONNECTION & ACCESSORIES

External Corner Angle



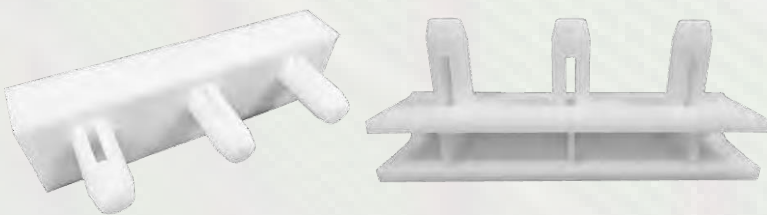
Material type	: Polycarbonate & Acrylonitrile Butadiene Styrene (PC+ABS)
Colour	: Black
Compatibility	: All Plasform Generation
Overall size	: 600mm x 53mm x 53mm

Internal Corner Angle



Material type	: Aluminium
Colour	: Aluminium Silver finished
Compatibility	: All Plasform Generation
Overall size	: 100mm x 100mm x Variable length

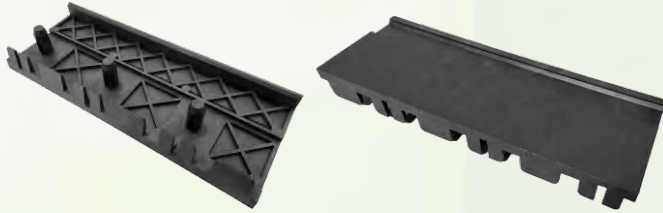
Ply-infill Adapter



Material type	: Polypropylene (PP)
Colour	: White (Natural)
Compatibility	: Use in conjunction with 12mm Ply All Plasform Generation & accessories
Overall size	: 150mm x 60mm x 40mm

CONNECTION & ACCESSORIES

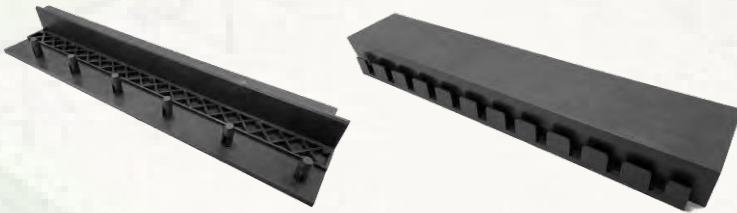
Beam Soffit Clip Connector



Material type	: Polypropylene (PP)
Colour	: Black
Compatibility	: All Plasform Generation
Overall size	: 300mm x 115mm x 42mm



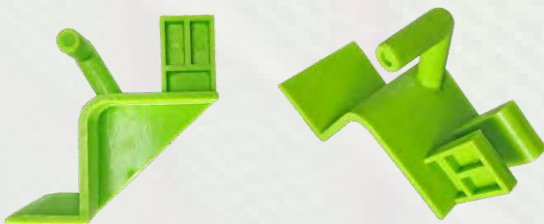
Slab Clip Connector



Material type	: Polypropylene (PP)
Colour	: Black
Compatibility	: All Plasform Generation
Overall size	: 600mm x 60mm x 115mm



PSH-50 Bracket

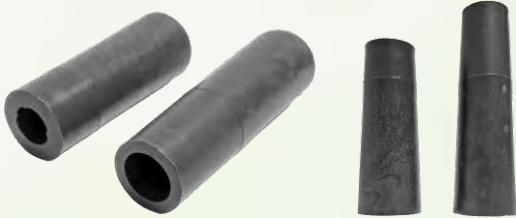


Material type	: Polypropylene (PP)
Colour	: Green / Black
Compatibility	: All Plasform Generation & accessories
Overall size	: 90mm x 90mm x 50mm



CONNECTION & ACCESSORIES

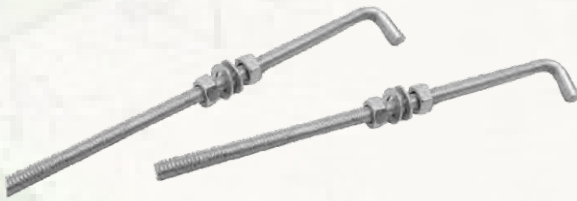
Taper Cone



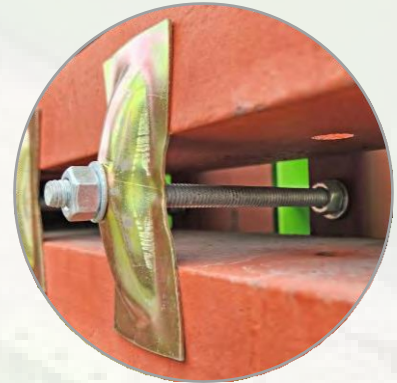
Material type	: Polypropylene (PP)
Colour	: Black
Compatibility	: All Plasform Generation
Overall size	: Variable size available



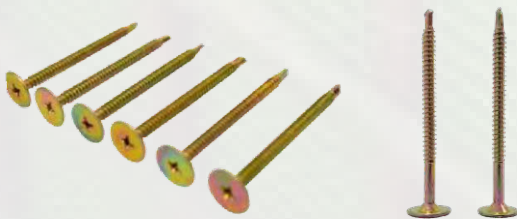
J-Bolt



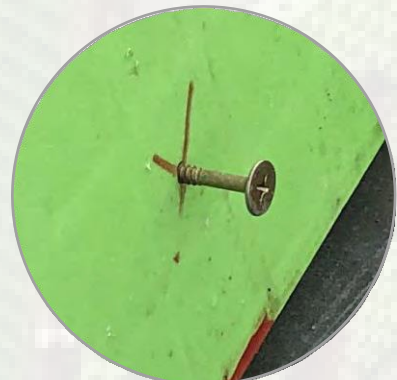
Material type	: Steel
Colour	: Silver finished
Compatibility	: All Plasform Generation
Overall size	: Ø 9mm x 250mm



Wide-head Tapping Screw



Material type	: Steel with protective Zinc
Colour	: Yellow metallic
Compatibility	: All Plasform Generation
Overall size	: Ø 5mm x 80mm



PLASFORM STRUCTURE FORMING APPLICATION

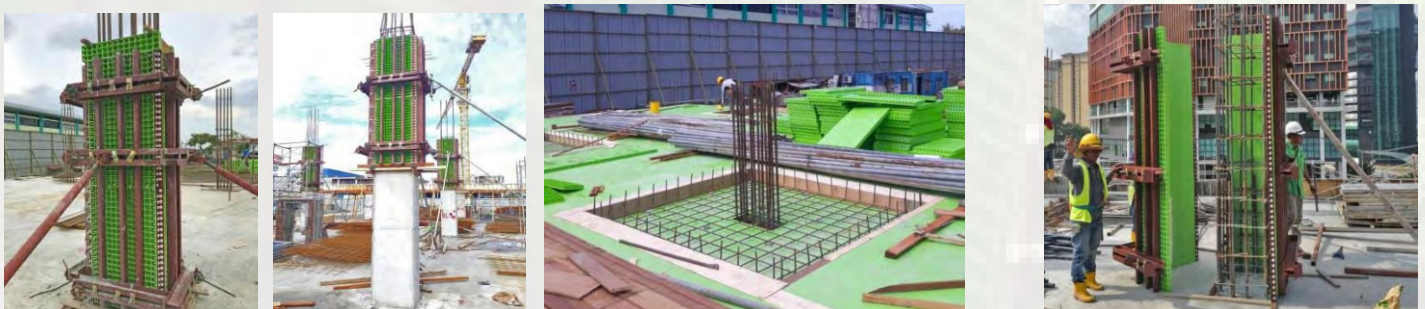
PILE CAP FORMWORK



GROUND BEAM FORMWORK



COLUMN FORMWORK



PLASFORM STRUCTURE FORMING APPLICATION

LIFT CORE FORMWORK



WALL FORMWORK (CRANE HANDLE)



WALL FORMWORK (MAN HANDLE)



PLASFORM STRUCTURE FORMING APPLICATION

BEAM FORMWORK



BEAM & SLAB FORMWORK



INFRASTRUCTURE FORMWORK



PLASFORM STRUCTURE FORMING INTERNATIONAL

INDIA



PHILIPPINES



OTHER COUNTRIES

MYANMAR

VIETNAM

BRUNEI

INDONESIA





SDG 17 GOALS

1 NO POVERTY



2 ZERO HUNGER



3 GOOD HEALTH AND WELL-BEING



4 QUALITY EDUCATION



5 GENDER EQUALITY



6 CLEAN WATER AND SANITATION



7 AFFORDABLE AND CLEAN ENERGY



8 DECENT WORK AND ECONOMIC GROWTH



9 INDUSTRY, INNOVATION AND INFRASTRUCTURE



10 REDUCED INEQUALITIES



11 SUSTAINABLE CITIES AND COMMUNITIES



12 RESPONSIBLE CONSUMPTION AND PRODUCTION



13 CLIMATE ACTION



14 LIFE BELOW WATER



15 LIFE ON LAND



16 PEACE, JUSTICE AND STRONG INSTITUTIONS



17 PARTNERSHIPS FOR THE GOALS



THE GLOBAL GOALS
For Sustainable Development

Plasform solution may contribute directly or indirectly


Millennium

— A VENTURE OF CHOURARIA GROUP —

Mangalam Chambers, Level-3,
25, KH Road, Bangalore - 560027,
Karnataka, India

+91 80 2229 2484
info@chourariagroup.com
www.millenniumgroup.co.in

Bengaluru - 98443 50010

Chennai - 94450 91375

Hyderabad - 83090 90155

PATENTED DESIGN & TECHNOLOGY

The product design and technology is patented under PCT International, legal action shall be taken against any party who infringed or attempt to infringe the patents.

REGISTERED TRADEMARK

Plasform is a registered trademark for the reusable plastic formwork. Infringement of rights for registered trademarks can be taken through criminal or civil action.

We adopt the policy of continuous improvement and we reserve the rights to change or modify any design, details & information in this booklet without any form of prior notice.